

**EPISTAR TRIDONIC**






**LITE 150 LED SERIES 1500mm 40W**

CODE: 651540DZXX

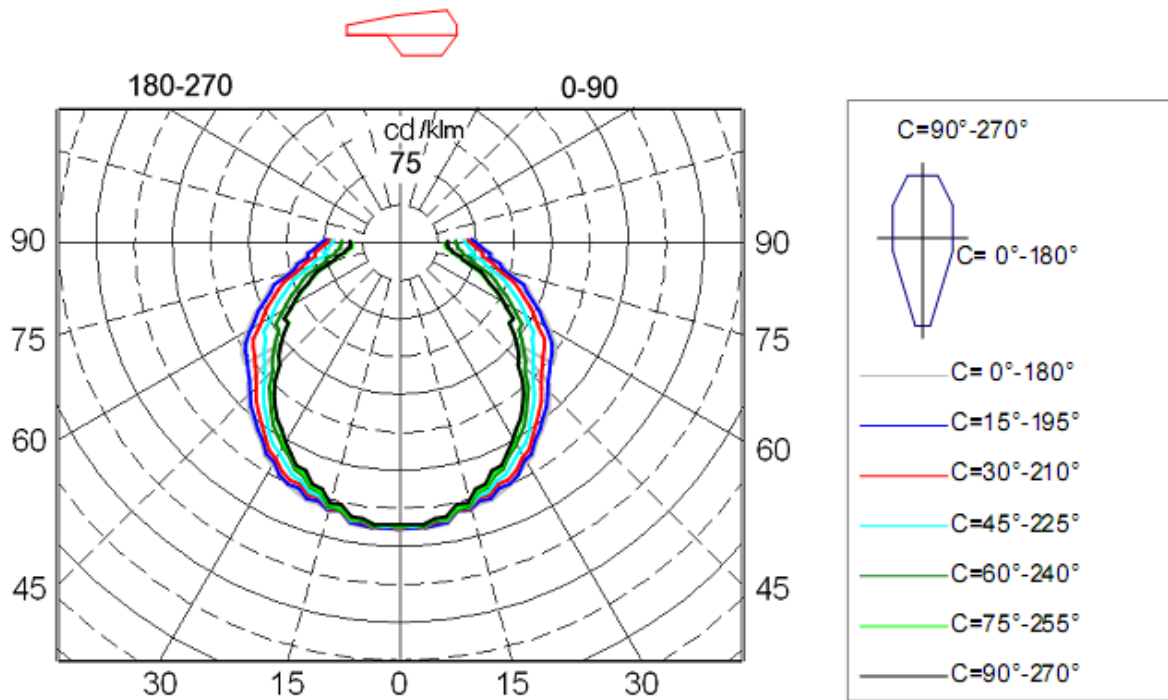


**Electrical Specification**

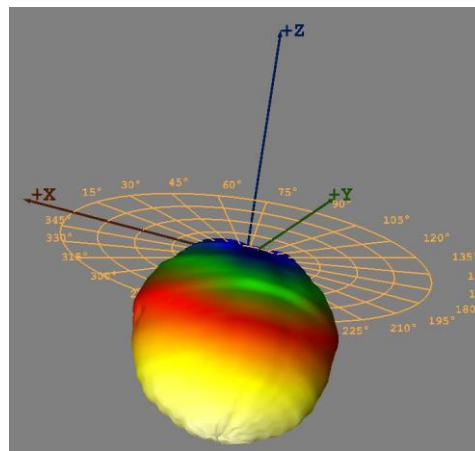
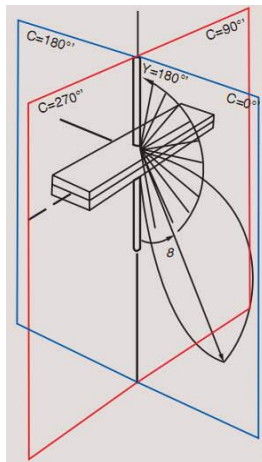
Size	Light source	Driver	Voltage	Power	CCT	IP level	lumens	CRI
1500mm	SMD 5730 EPISTAR	TRIDONIC	220V-240V	40W	3000K 4000K 5000k	IP65	5200lm	CRI>80
Diffuser	Angel	Tc=C°	Certificates	Application	PF	Directive	Life span	Warranty
OPAL	120°	-20/+45	ROHS/CE	INDOR/ OUTDOOR	PF>0.95	LVD	50 000h	5 years

 <p><b>METAL SHEET</b></p> <ul style="list-style-type: none"> <li>• DKP Metal Sheet</li> <li>• White Paint</li> <li>• 0,40 mm Thickness</li> </ul>	 <p><b>CABLE GLAND</b></p> <ul style="list-style-type: none"> <li>• Raw material : Polyamide</li> <li>• Protection class: IP 65</li> <li>• Heat Resistance : - 30 °C + 80 °C</li> </ul>	 <p><b>CEILING CARRIER</b></p> <ul style="list-style-type: none"> <li>• Stainless Steel</li> <li>• Easy and practical installation with biasing Feature</li> <li>• 0,60 mm Thickness</li> </ul>
 <p><b>MANDAL</b></p> <ul style="list-style-type: none"> <li>• Stainless Steel</li> <li>• Easy and practical installation with biasing Feature</li> <li>• 0,50 mm Thickness</li> </ul>	 <p><b>DRIVER</b></p> <ul style="list-style-type: none"> <li>• Suitable for CE and ROHS Criteria</li> <li>• High Efficiency &gt;90</li> <li>• Harmonic Filter</li> <li>• Lasts for 50.000 Hr</li> </ul>	 <p><b>CABLE</b></p> <ul style="list-style-type: none"> <li>• 0,80mm Thickness</li> <li>• Electrolytic Solid Copper</li> <li>• TI/PVC Isolation</li> </ul>

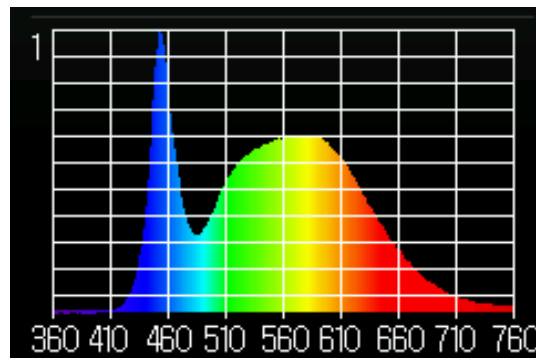
# Test Reports



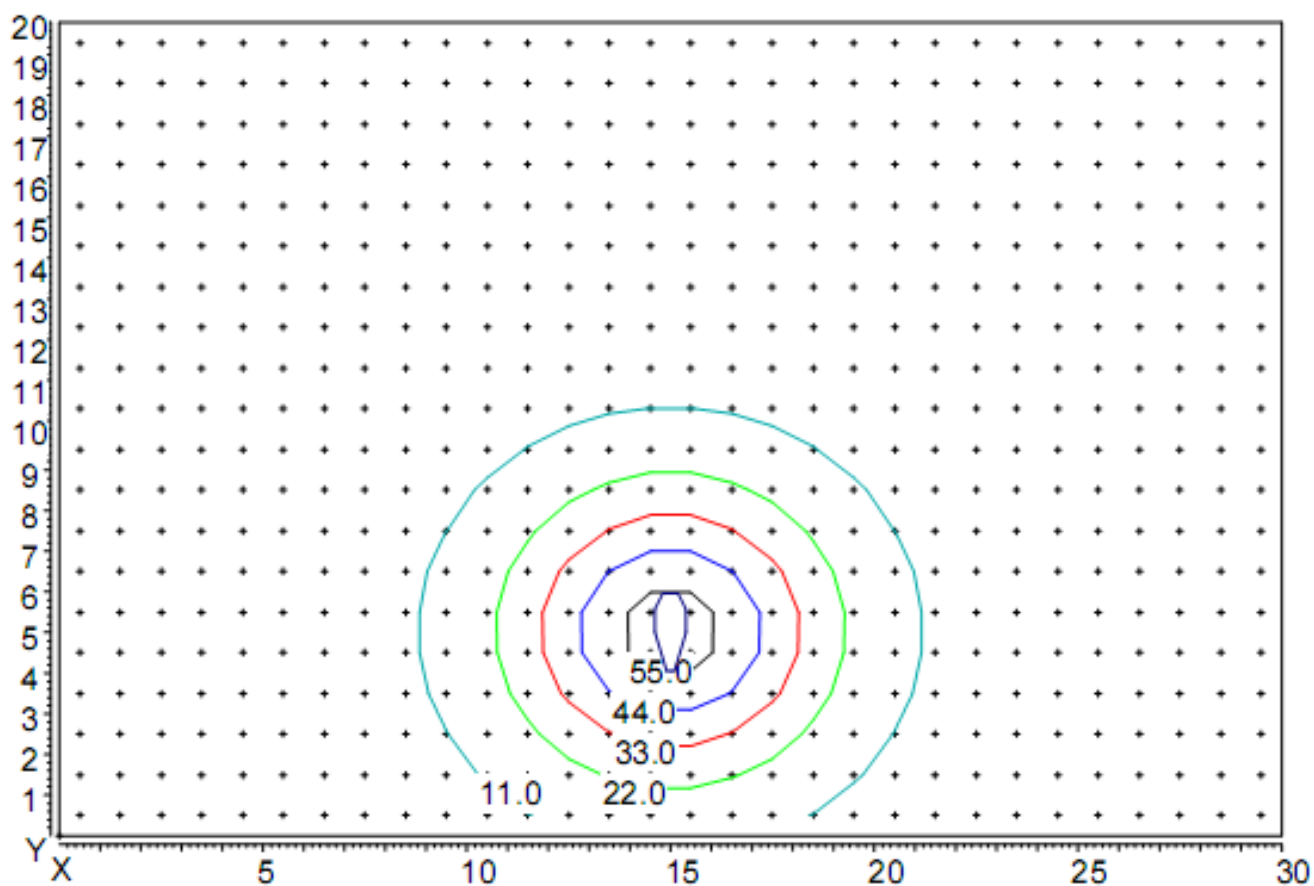
**Luminaire light distribution of polar coordinates in the conditional flux 1000lm**



**Luminaire light distribution of the 3D**



**Spectrum of light**



Distribution of illumination in height hanging lamp 5 m

Coordinates of the luminaire X=15m, Y=5m.