

EPISTAR TRIDONIC






LITE 150 LED SERIES 1500mm 24W

CODE: 651524ZXX

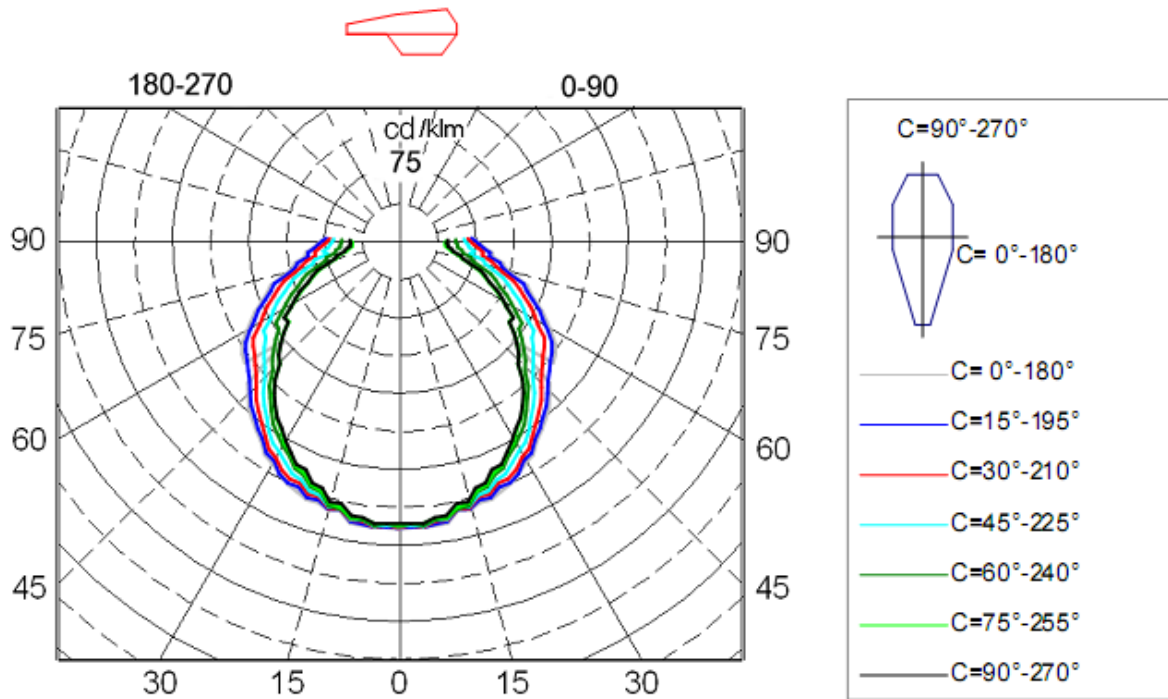


Electrical Specification

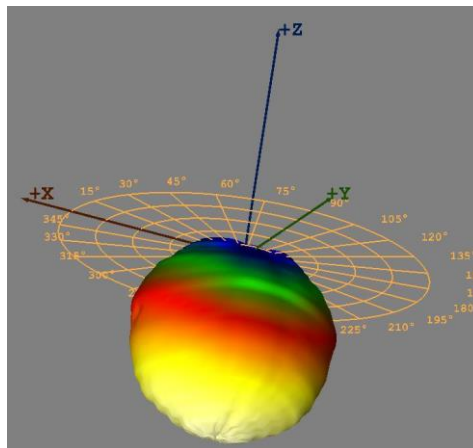
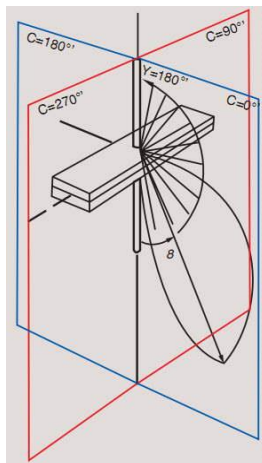
Size	Light source	Driver	Voltage	Power	CCT	IP level	lumens	CRI
1500mm	SMD 5730 EPISTAR	TRIDONIC	220V-240V	24W	3000K 4000K 5000k	IP65	3200lm	CRI>80
Diffuser	Angel	Tc=C°	Certificates	Application	PF	Directive	Life span	Warranty
OPAL	120°	-20/+45	ROHS/CE	INDOR/ OUTDOOR	PF>0.95	LVD	50 000h	5 years

 <p>METAL SHEET</p> <ul style="list-style-type: none"> • DKP Metal Sheet • White Paint • 0,40 mm Thickness 	 <p>CABLE GLAND</p> <ul style="list-style-type: none"> • Raw material : Polyamide • Protection class: IP 65 • Heat Resistance : - 30 °C + 80 °C 	 <p>CEILING CARRIER</p> <ul style="list-style-type: none"> • Stainless Steel • Easy and practical installation with biasing Feature • 0,60 mm Thickness
 <p>MANDAL</p> <ul style="list-style-type: none"> • Stainless Steel • Easy and practical installation with biasing Feature • 0,50 mm Thickness 	 <p>DRIVER</p> <ul style="list-style-type: none"> • Suitable for CE and ROHS Criterias • High Efficiency >90% • Harmonic Filter • Lasts for 50.000 Hr 	 <p>CABLE</p> <ul style="list-style-type: none"> • 0,80mm Thickness • Electrolytic Solid Copper • TI/PVC Isolation

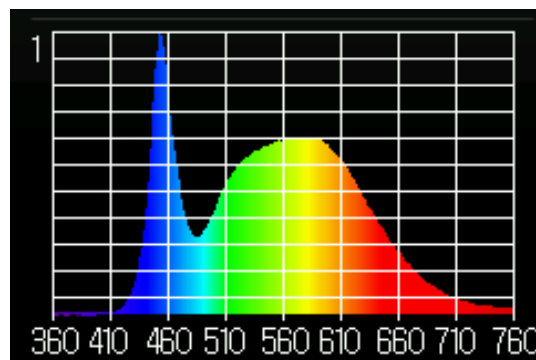
Test Reports



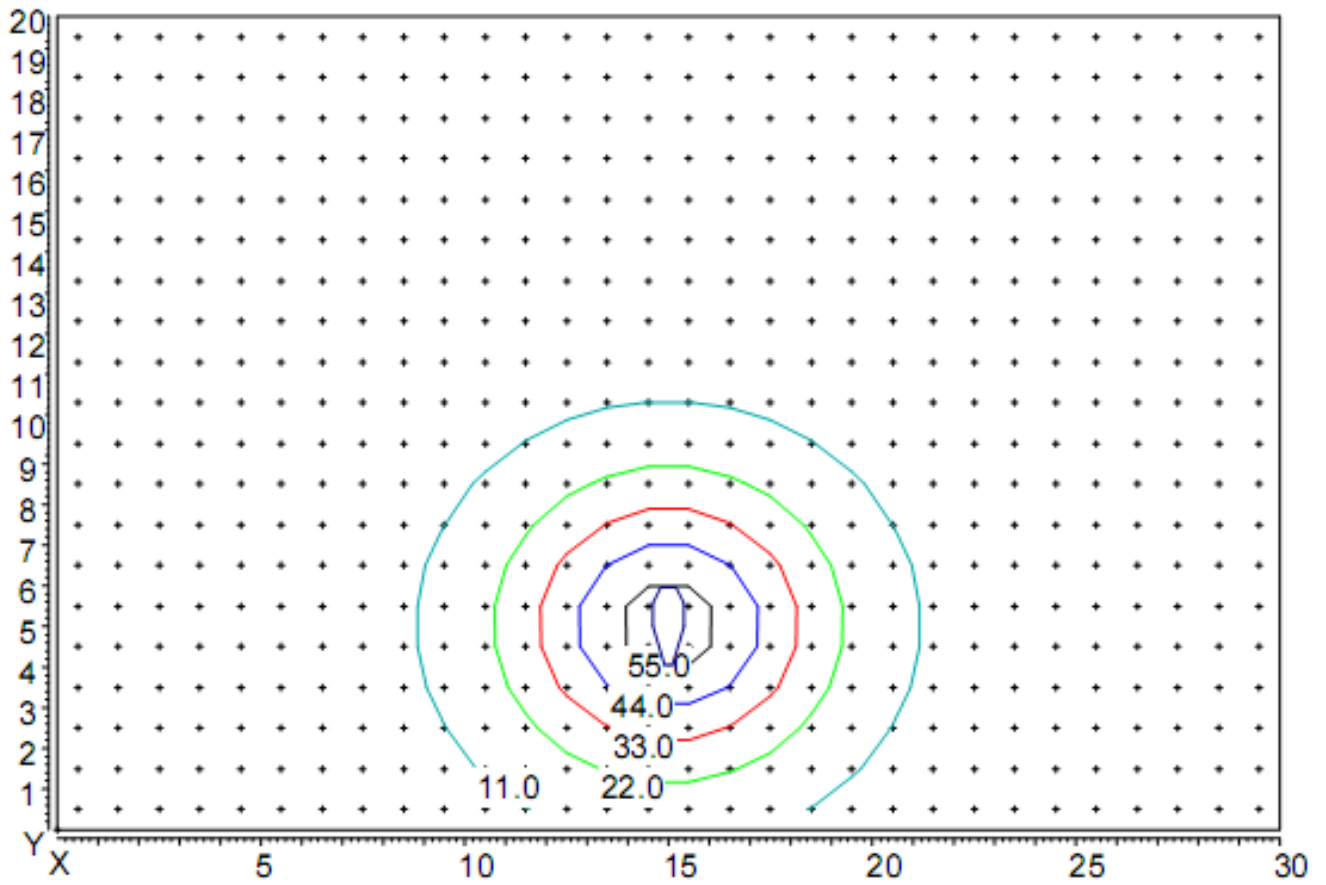
Luminaire light distribution of polar coordinates in the conditional flux 1000lm



Luminaire light distribution of the 3D



Spectrum of light



Distribution of illumination in height hanging lamp 5 m

Coordinates of the luminaire X=15m, Y=5m.