

EPISTAR TRIDONIC



LITE 120 LED SERIES 1200mm 20W





CODE: 651220ZXX

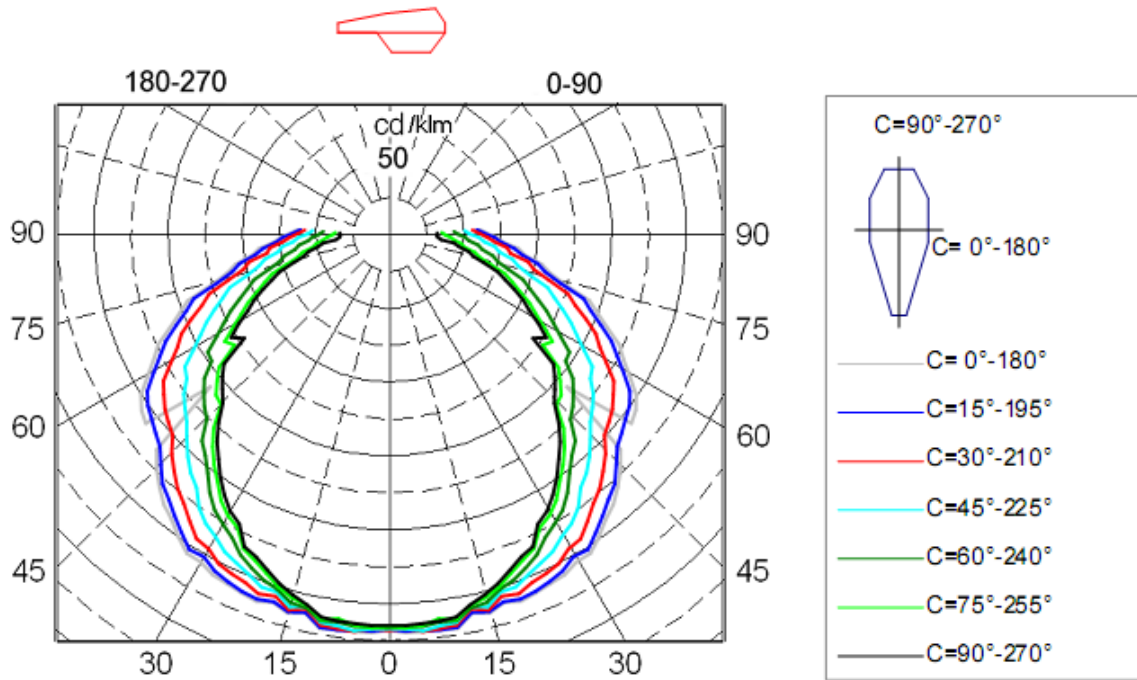


Electrical Specification

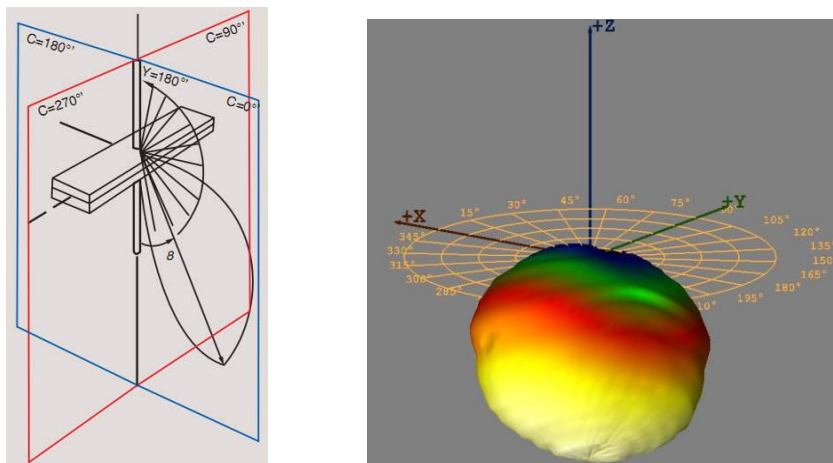
Size	Light source	Driver	Voltage	Power	CCT	IP level	lumens	CRI
1200mm	SMD 5730 EPISTAR	TRIDONIC	220V-240V	20W	3000K 4000K 5000k	IP65	2800lm	CRI>80

Diffuser	Angel	Tc=C°	Certificates	Application	PF	Directive	Life span	Warranty
OPAL	120°	-20/+45	ROHS/CE	INDOR/ OUTDOOR	PF>0.95	LVD	50 000h	5 years

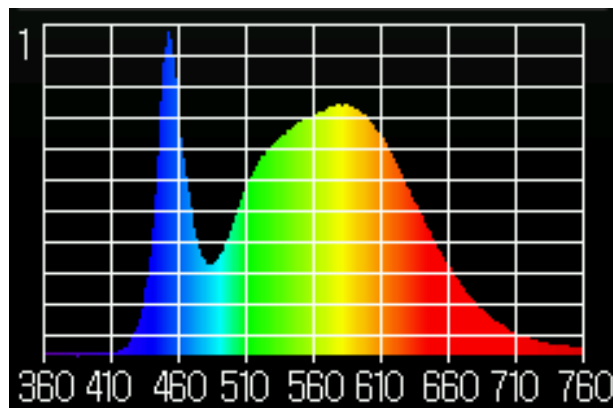
 <p>METAL SHEET</p> <ul style="list-style-type: none"> • DKP Metal Sheet • White Paint • 0,40 mm Thickness 	 <p>CABLE GLAND</p> <ul style="list-style-type: none"> • Raw material : Polyamide • Protection class: IP 65 • Heat Resistance : - 30 °C + 80 °C 	 <p>CEILING CARRIER</p> <ul style="list-style-type: none"> • Stainless Steel • Easy and practical installation with biasing Feature • 0,60 mm Thickness
 <p>MANDAL</p> <ul style="list-style-type: none"> • Stainless Steel • Easy and practical installation with biasing Feature • 0,50 mm Thickness 	 <p>DRIVER</p> <ul style="list-style-type: none"> • Suitable for CE and ROHS Criterias • High Efficiency >90% • Harmonic Filter • Lasts for 50.000 Hr 	 <p>CABLE</p> <ul style="list-style-type: none"> • 0,80mm Thickness • Electrolytic Solid Copper • TI/PVC Isolation



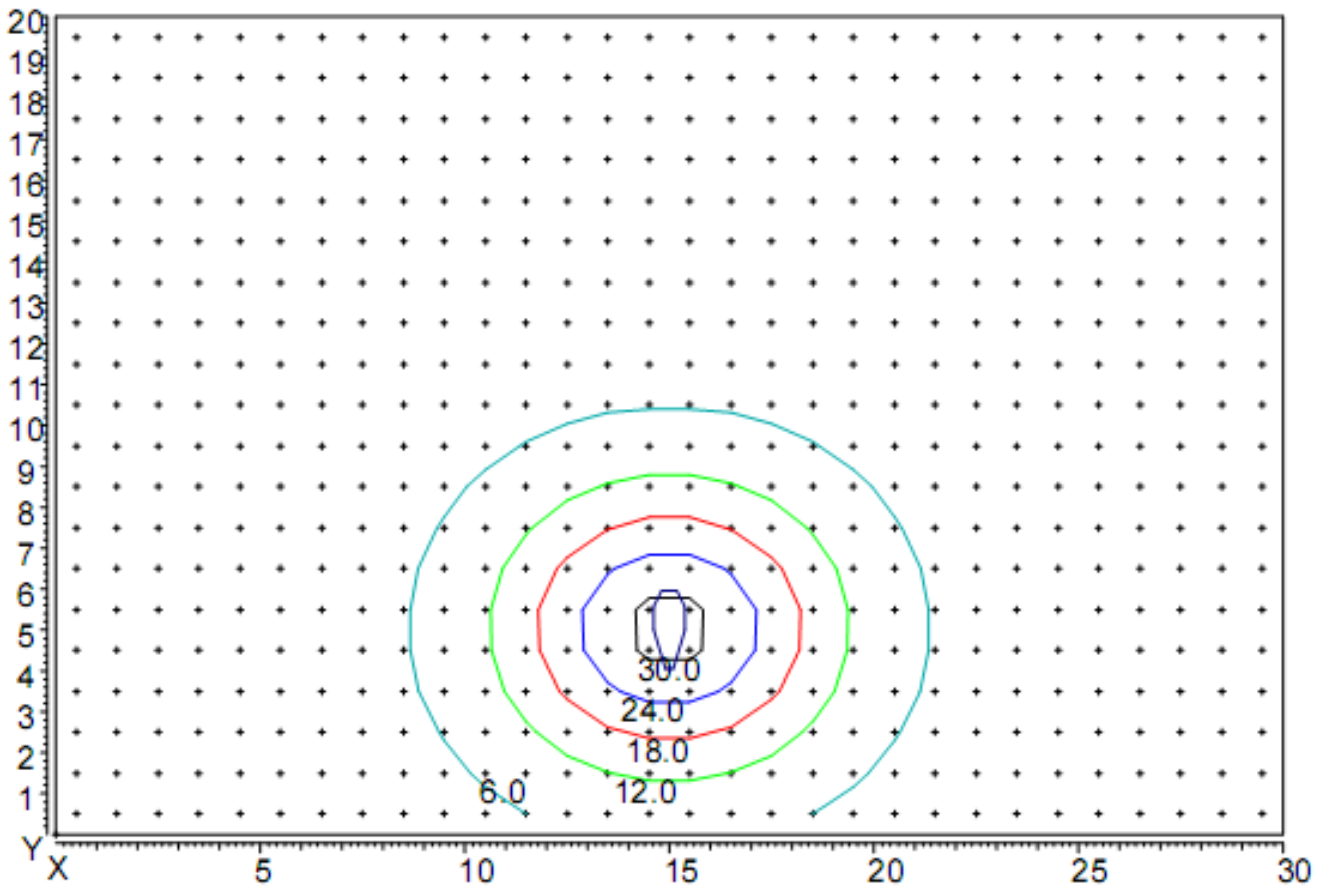
Luminaire light distribution of polar coordinates in the conditional flux 1000lm



Luminaire light distribution of the 3D



Spectrum of light



Distribution of illumination in height hanging lamp 5 m

Coordinates of the luminaire X=15m, Y=5m.