

EPISTAR TRIDONIC



HIGH BAY HBPA40 39W

Code: HB39PA50



- DRIVER**
- Suitable for CE and ROHS Criteria
 - High Efficiency >%90
 - Harmonic Filter
 - Lasts for 50.000 Hr

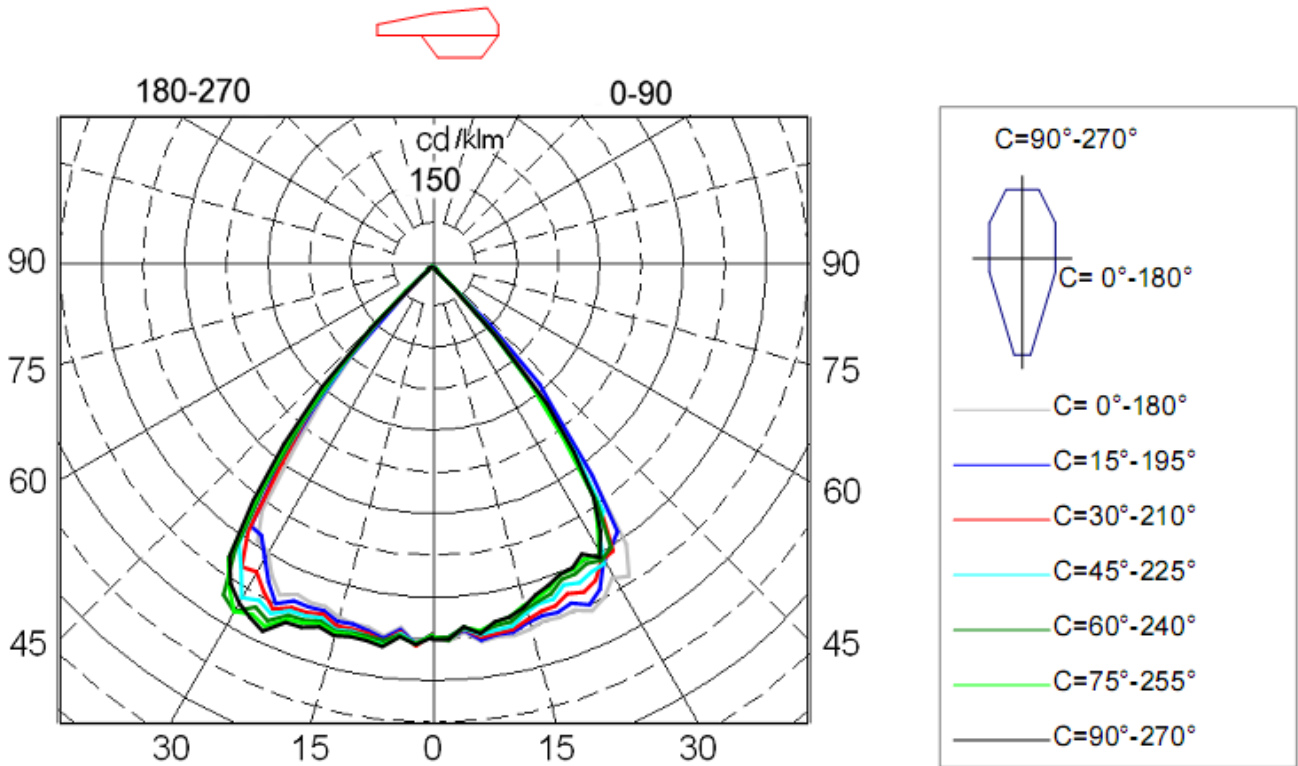


- CABLE**
- 0,80mm Thickness
 - Electrolytic Solid Copper
 - TI/PVC Isolation

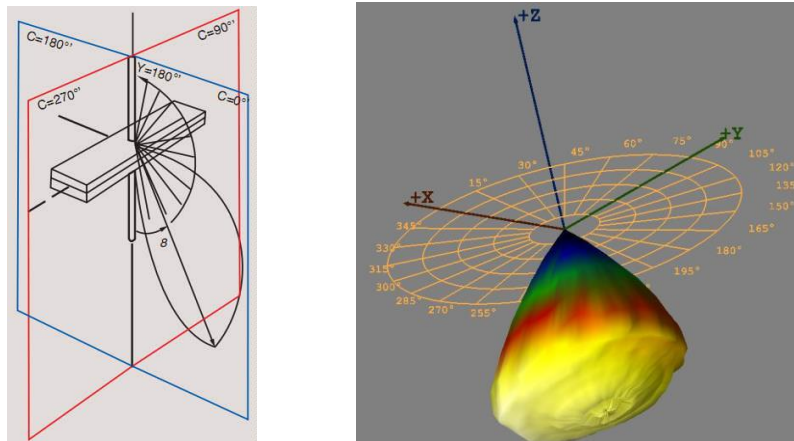


Electrical Specification

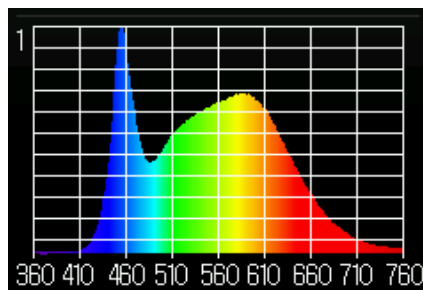
Size	Light source	Driver	Voltage	Power	CCT	IP level	lumens	CRI
410*410*280mm	SMD 2735	TRIDONIC	220V-240V	39W	5000K	IP20	3900lm	CRI>80
Diffuser OPTICS	Angel 120°	Tc=C° -20/+45	Certificates ROHS/CE	Application INDOOR	PF PF>0.95	Directive LVD	Lifespan 30 000h	Warranty 2 years



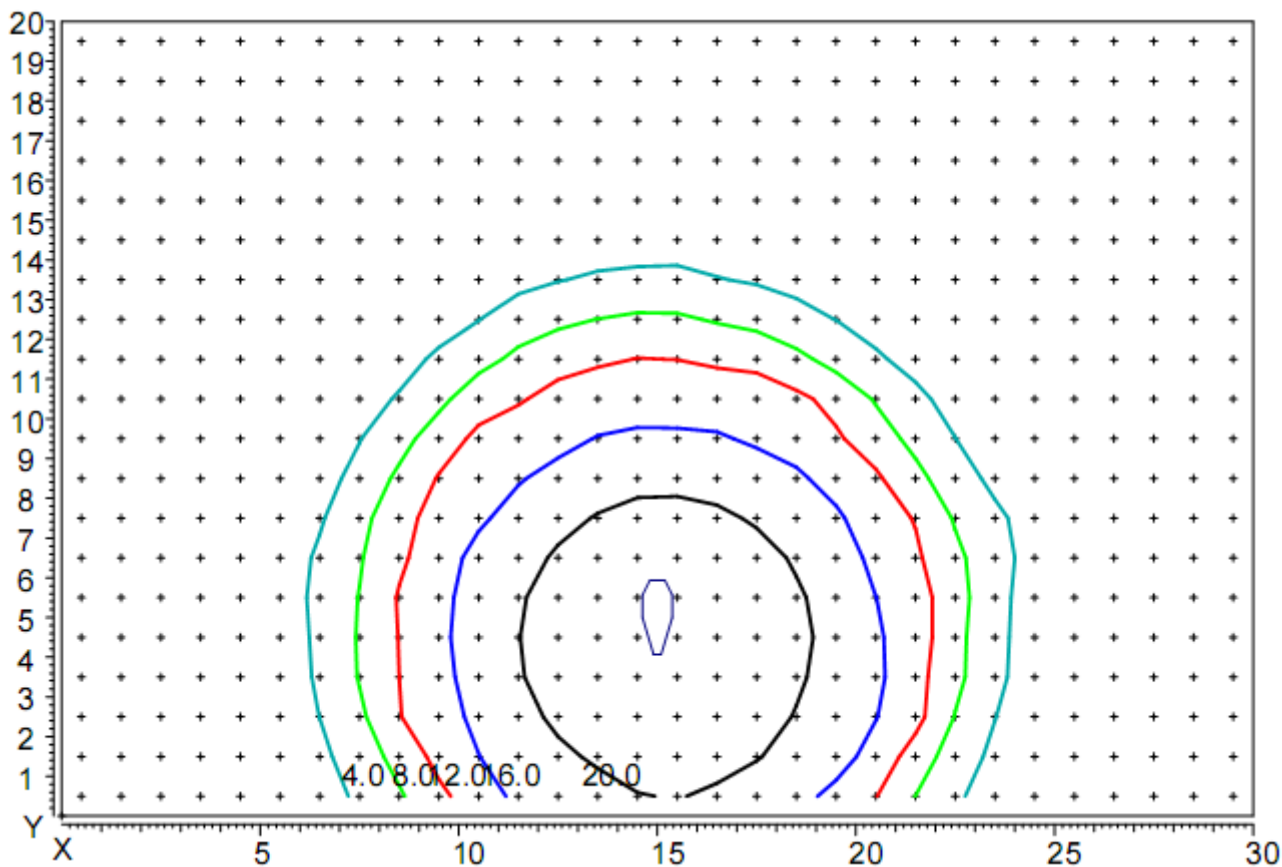
Luminaire light distribution of polar coordinates in the conditional flux 1000lm



Luminaire light distribution of the 3D



Spectrum of light



Distribution of illumination in height hanging lamp 10 m

Coordinates of the luminaire X=15m, Y=5m.