

EPISTAR



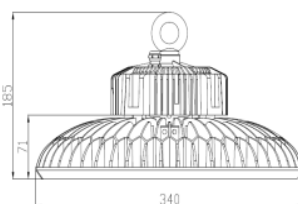
HIGH BAY HBUBD20 200W
Code: HB200UBD50



Driver
 CE and RoHS
 Efficiency>90%
 Dimmable
 Harmonic Filter
 50 000h



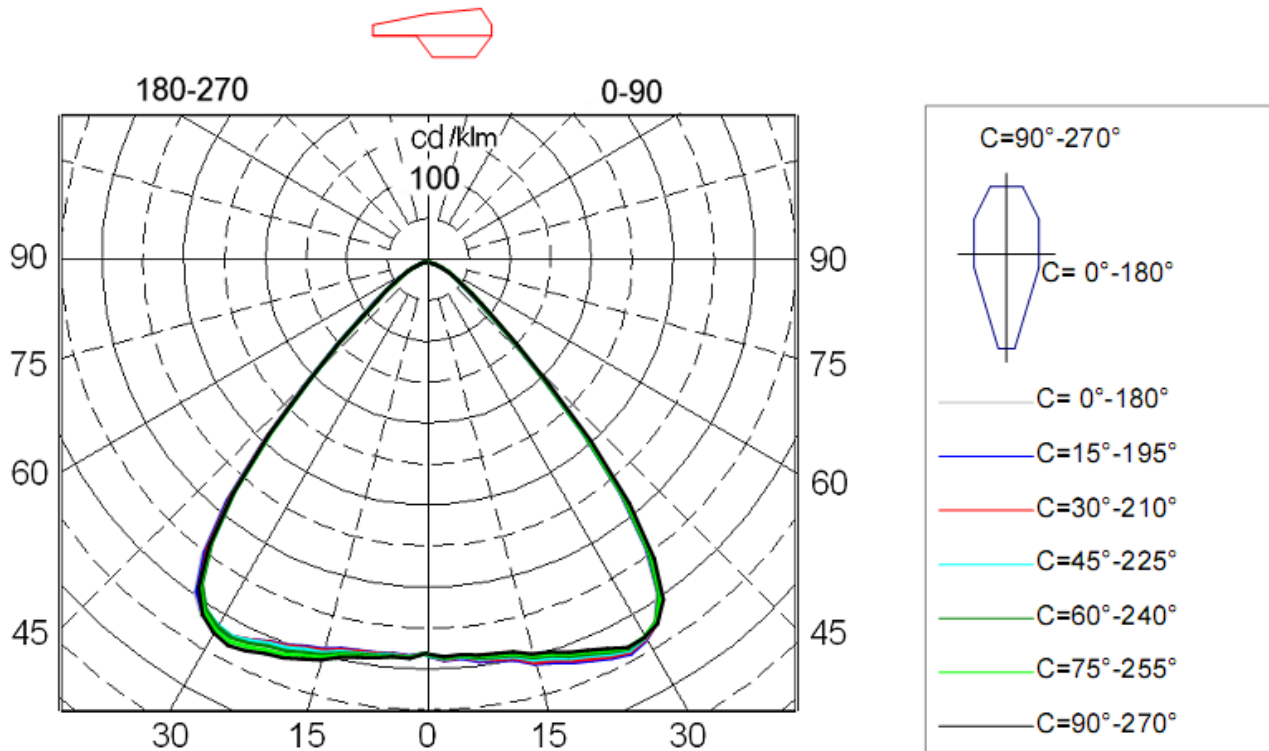
Driver
 CE and RoHS
 3030 SMD
 EPISTAR
 Gold Wire
 50 000h



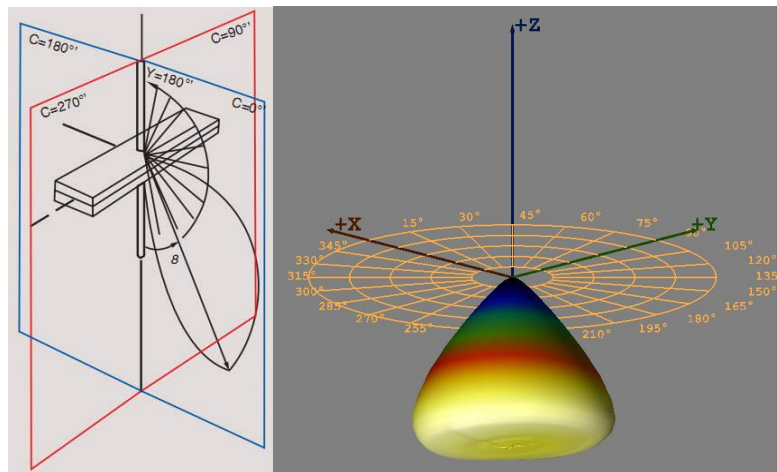
Electrical Specification

Size	Light source	Driver	Voltage	Power	CCT	IP level	lumens	CRI
440*440*215mm	SMD 3030	Dimmable 1-10V	220V-240V	200W	5000K	IP67	26000lm	CRI>80
Diffuser	Angel	Tc=C°	Certificates	Application	PF	Directive	Life span	Warranty
OPTICS	90°	-20/+45	ROHS/CE	INDOOR/ OUTDOOR	PF>0.95	LVD	50 000h	5 years

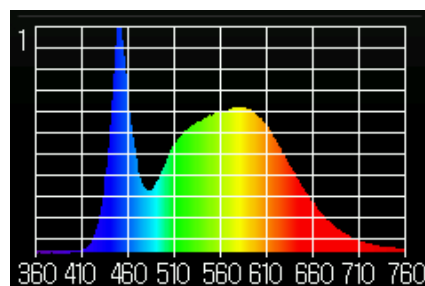
Test Reports



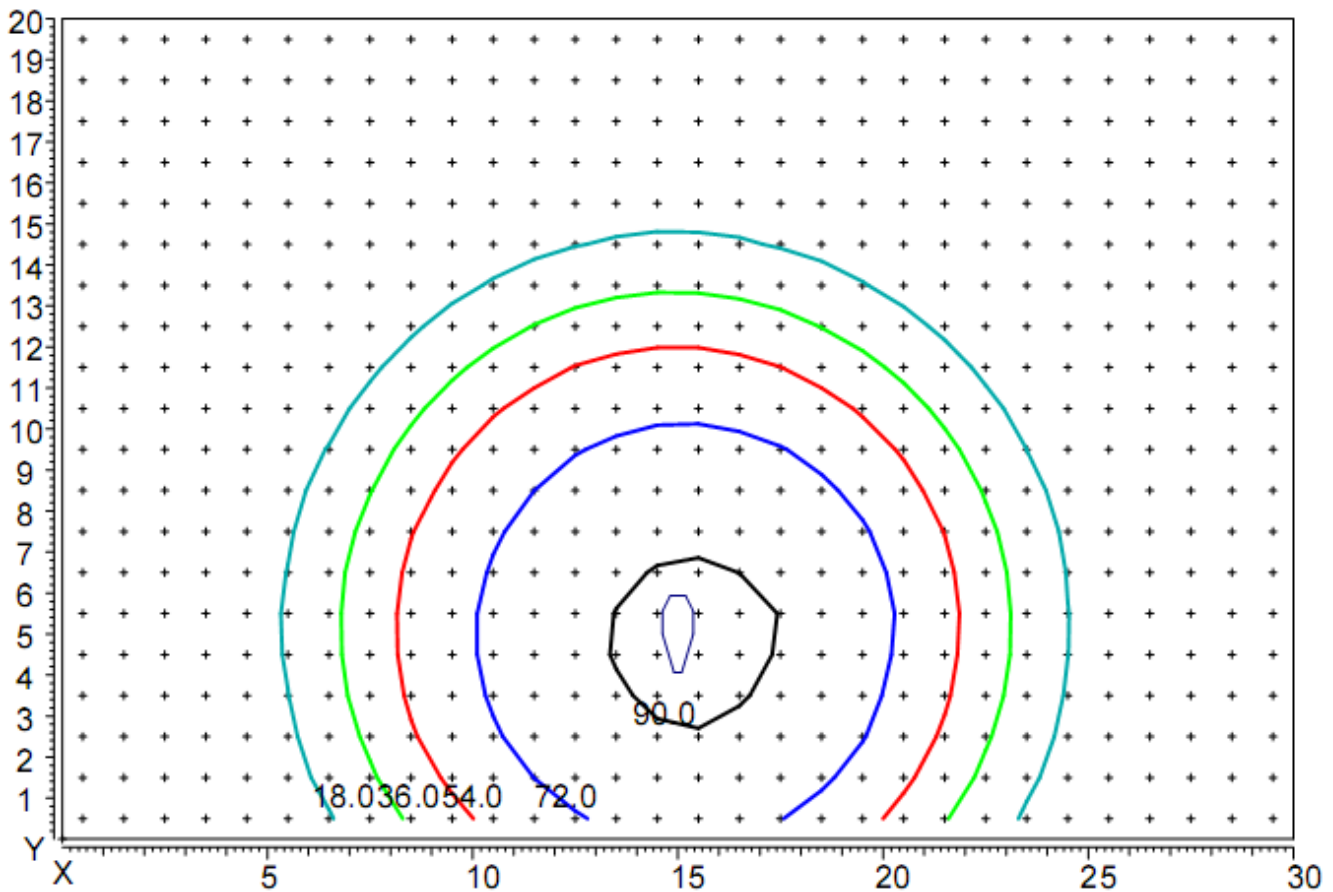
Luminaire light distribution of polar coordinates in the conditional flux 1000lm



Luminaire light distribution of the 3D



Spectrum of light



Distribution of illumination in height hanging lamp 10 m

Coordinates of the luminaire X=15m, Y=5m.