

EPISTAR



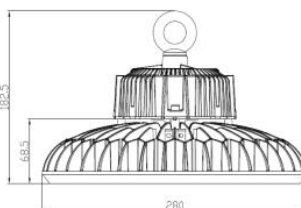
**HIGH BAY HBUBD10 100W**  
**Code: HB100UBD50**



**Driver**  
 CE and RoHS  
 Efficiency>90%  
 Dimmable  
 Harmonic Filter  
 50 000h



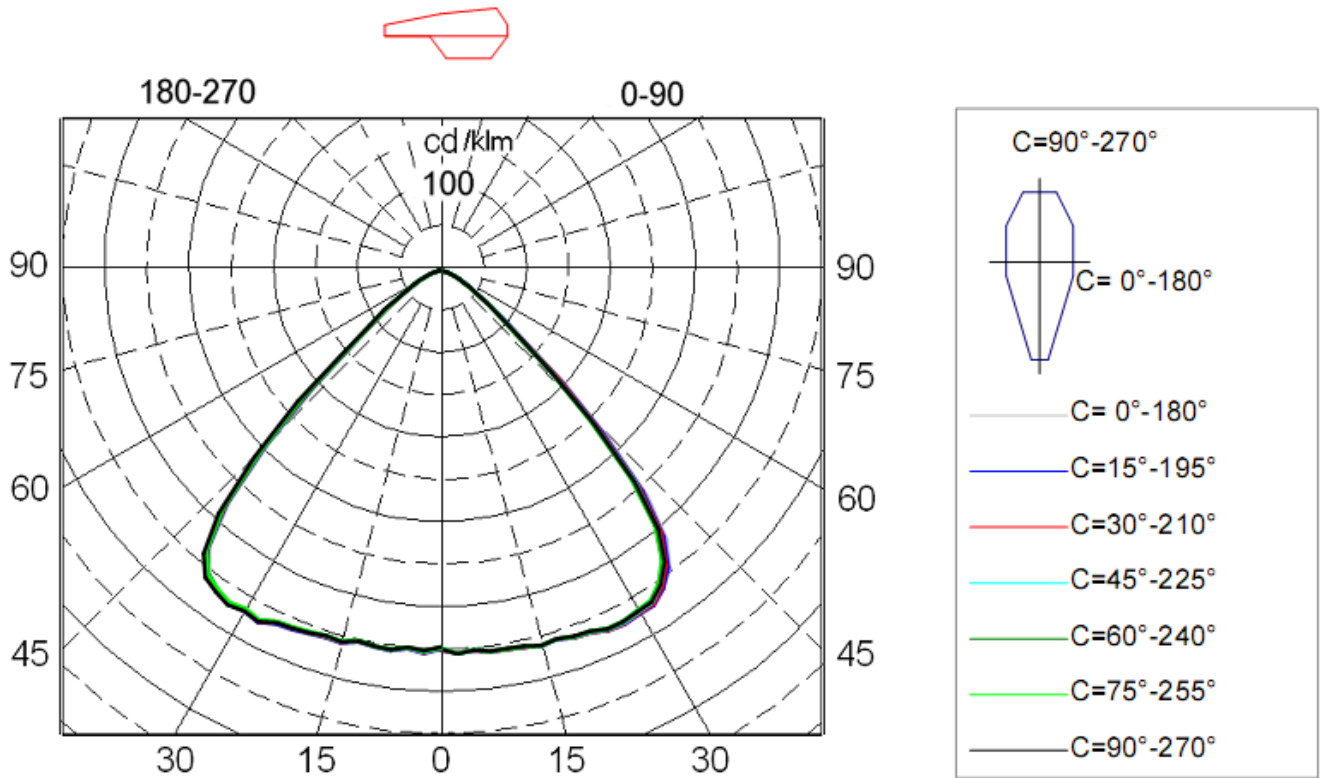
**Driver**  
 CE and RoHS  
 3030 SMD  
 EPISTAR  
 Gold Wire  
 50 000h



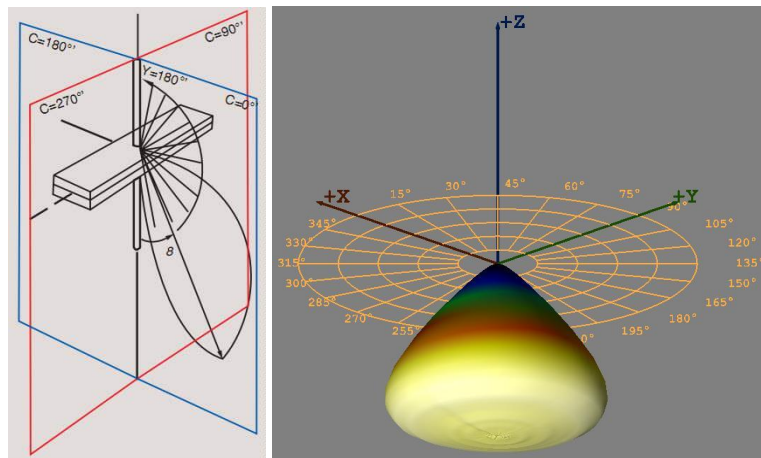
**Electrical Specification**

Size	Light source	Driver	Voltage	Power	CCT	IP level	lumens	CRI
330*330*205mm	SMD 3030	Dimmable 1-10V	220V-240V	100W	5000k	IP67	13 000lm	CRI>80

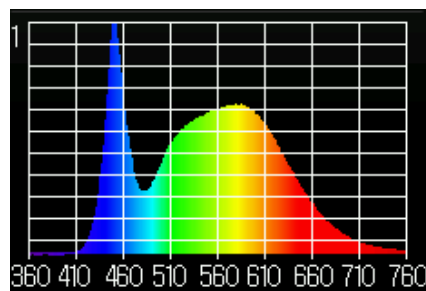
Diffuser	Angel	Tc=C°	Certificates	Application	PF	Directi ve	Life span	Warranty
OPTICS	90°	-20/+45	ROHS/CE	INDOOR/ OUTDOOR	PF>0.95	LVD	50 000h	5 years



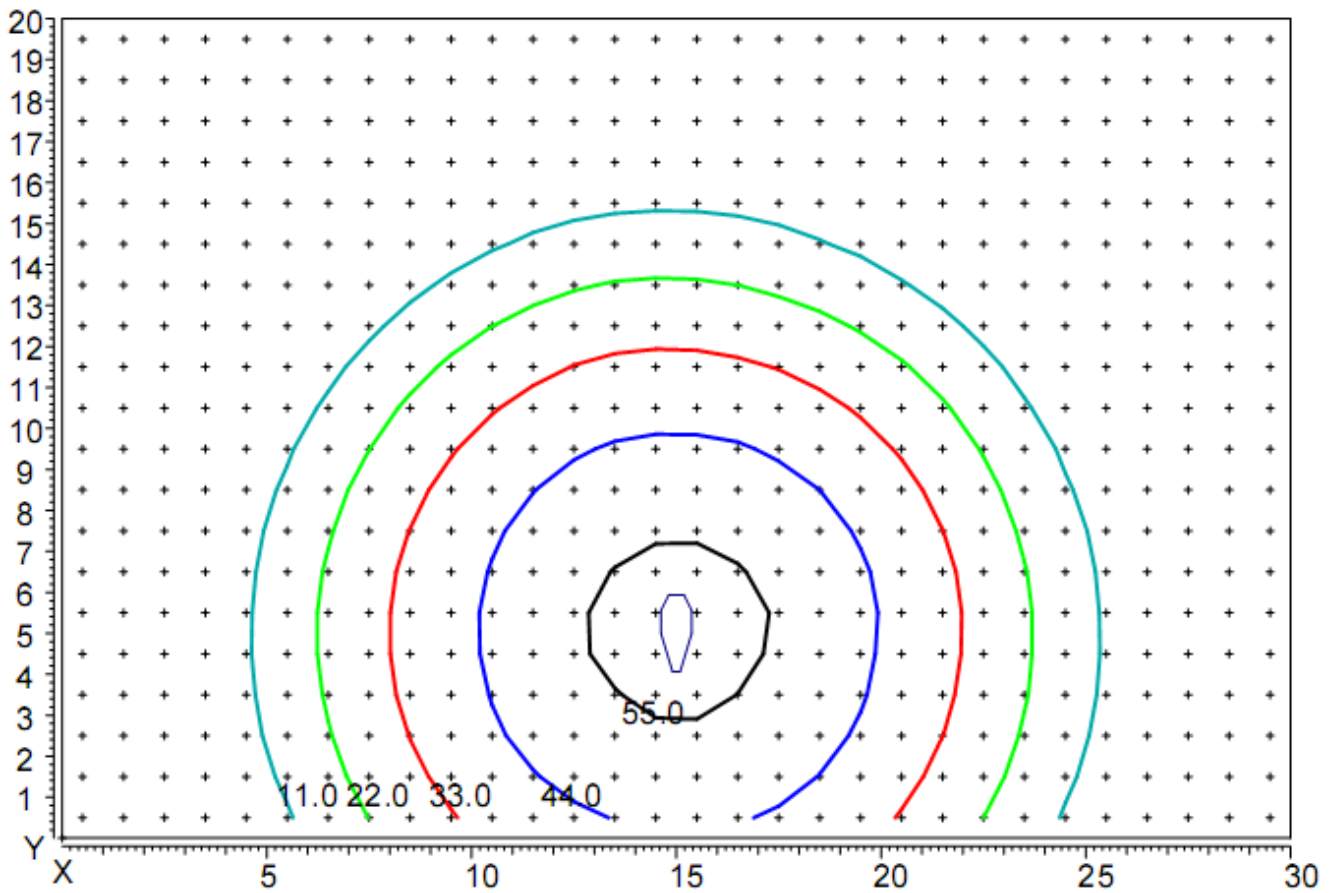
**Luminaire light distribution of polar coordinates in the conditional flux 1000lm**



**Luminaire light distribution of the 3D**



**Spectrum of light**



**Distribution of illumination in height hanging lamp 10 m**

**Coordinates of the luminaire X=15m, Y=5m.**