

**EPISTAR TRIDONIC**



**SREET LIGHT STL40 39W**  
**Code: 6739ALU50**



- DRIVER**
- Suitable for CE and ROHS Criterias
  - High Efficiency >%90
  - Harmonic Filter
  - Lasts for 50.000 Hr

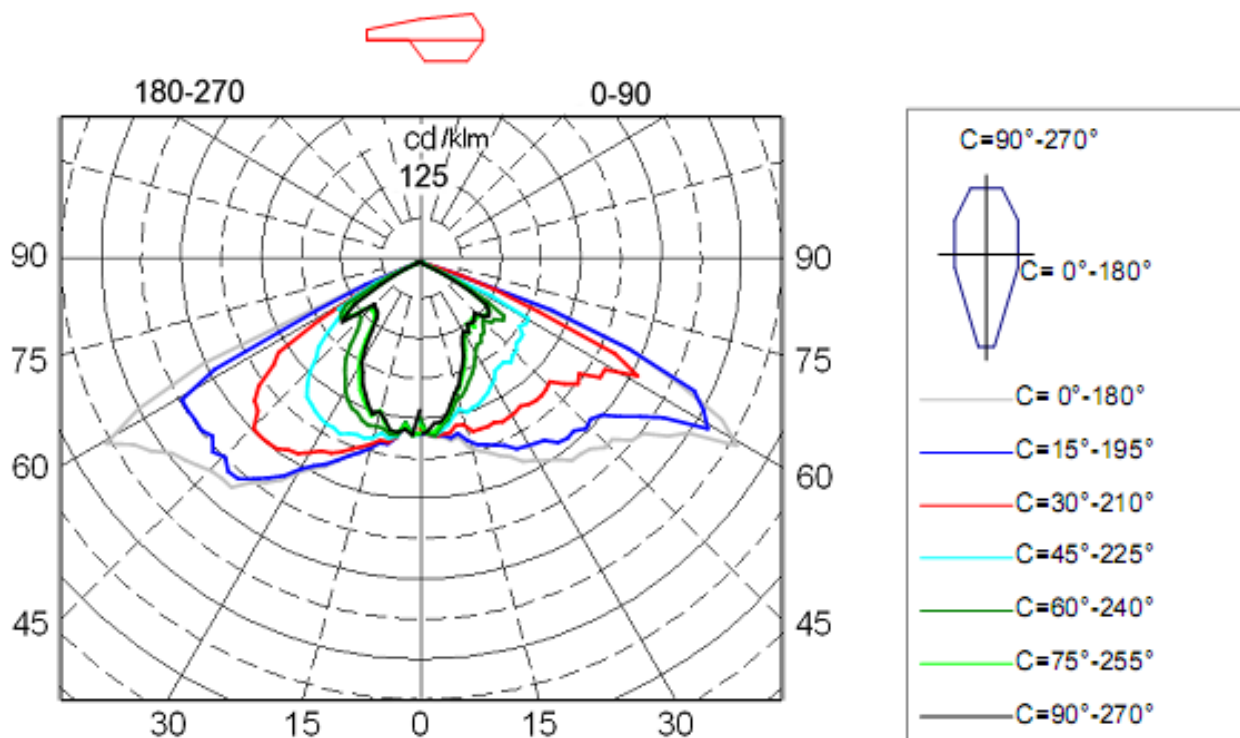


- CABLE**
- 0,80mm Thickness
  - Electrolytic Solid Copper
  - Tl/PVC Isolation

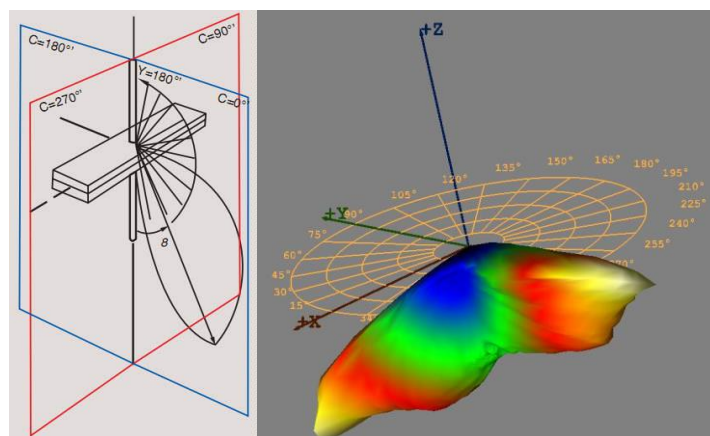


**Electrical Specification**

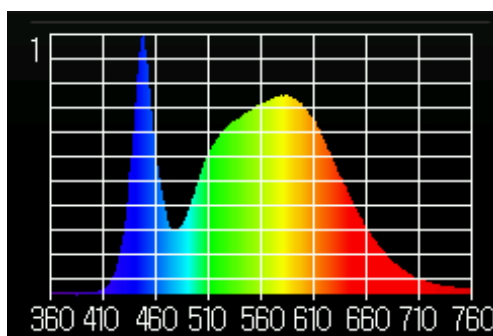
Size	Light source	Driver	Voltage	Power	CCT	IP level	lumens	CRI
640x250x80mm	SMD 5730 EPISTAR	TRIDONIC	220V-240V	39W	4500K 5500k	IP67	4240lm	CRI>80
Diffuser	Angel	Tc=C°	Certificates	Application	PF	Directive	Lifespan	Warranty
OPTICS	120°	-20/+45	ROHS/CE	OUTDOOR	PF>0.95	LVD	50 000h	3 years



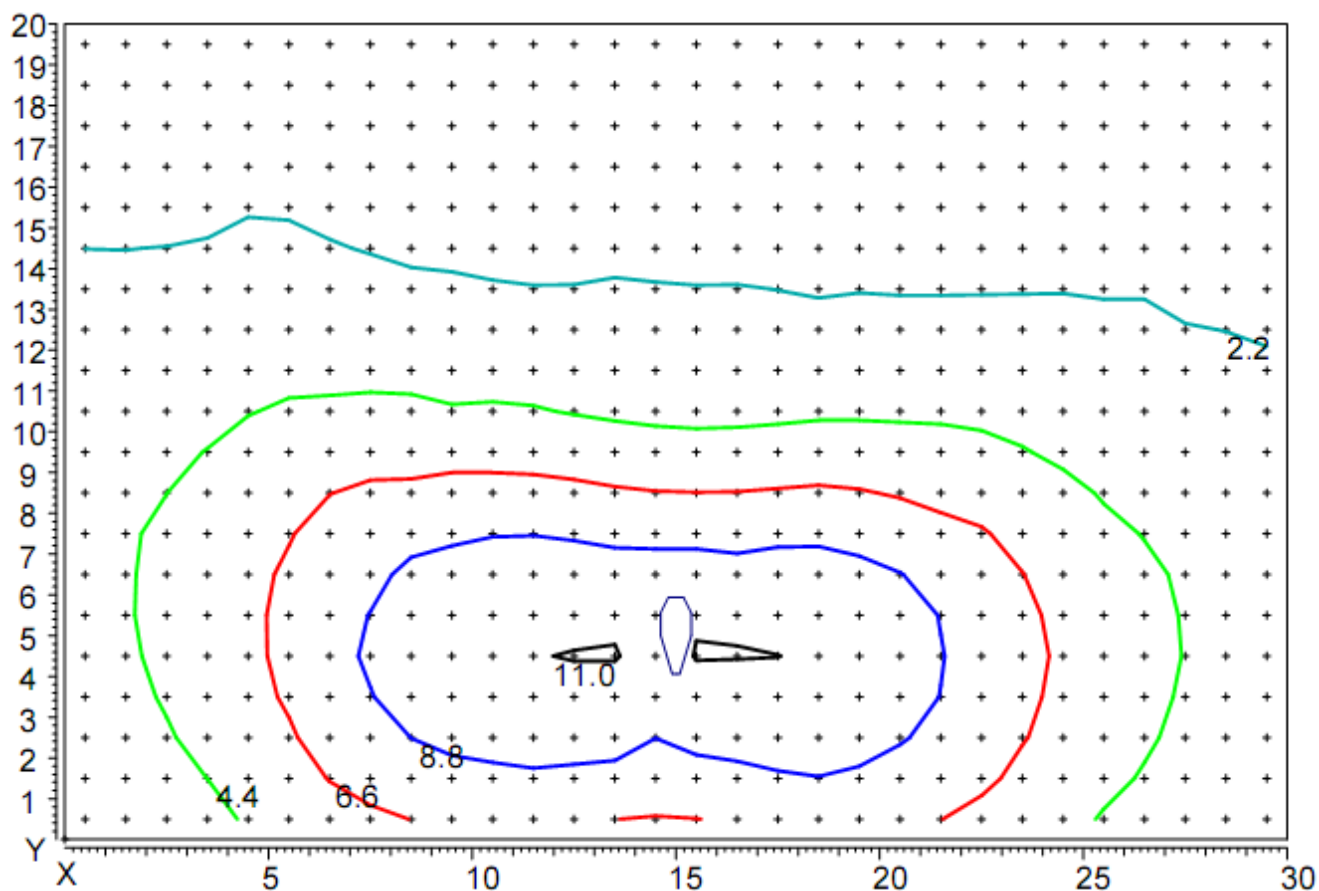
Luminaire light distribution of polar coordinates in the conditional flux 1000lm



Luminaire light distribution of the 3D



Spectrum of light



Distribution of illumination in height hanging lamp 5 m

Coordinates of the luminaire X=15m, Y=5m.