

EPISTAR TRIDONIC



LED PANEL LIGHT LP600 SURFACE MOUNTED 42W
Code: LP642



- DRIVER**
- Suitable for CE and ROHS Criteria
 - High Efficiency >%90
 - Harmonic Filter
 - Lasts for 50.000 Hr

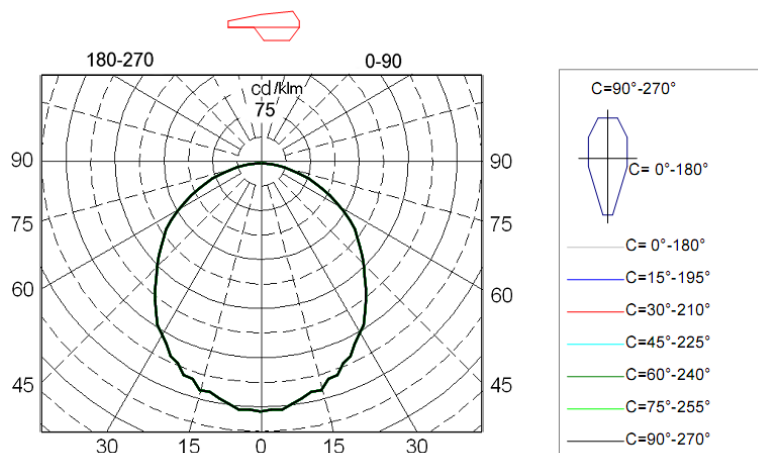


- CABLE**
- 0,80mm Thickness
 - Electrolytic Solid Copper
 - TI/PVC Isolation

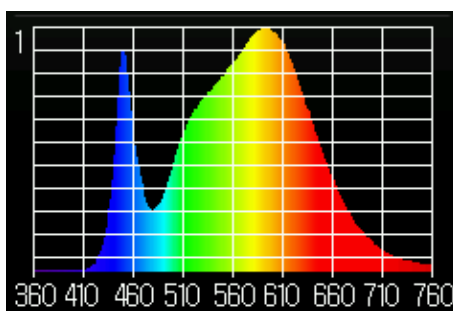


Electrical Specification

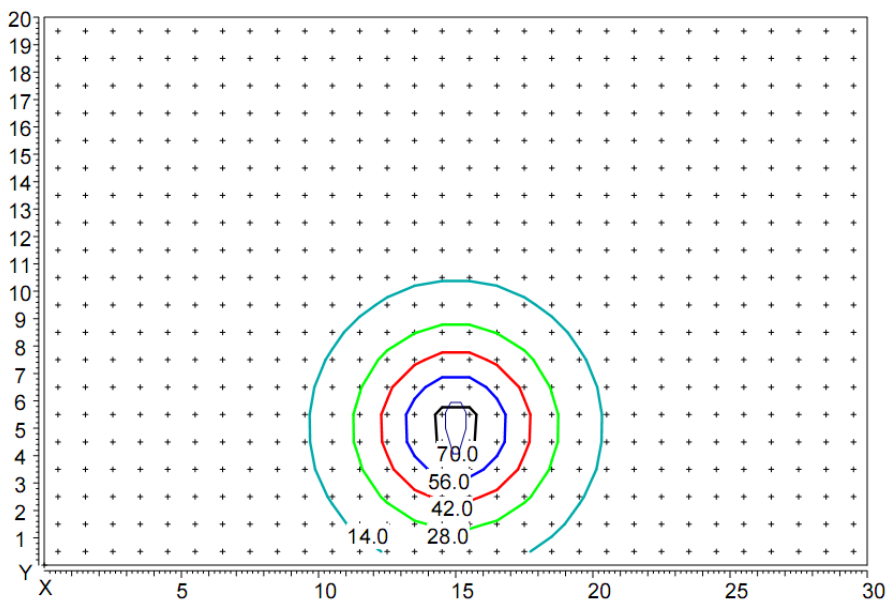
Size	Light source	Driver	Voltage	Power	CCT	IP level	lumens	CRI
600x600x70mm	SMD 5730 EPISTAR	TRIDONIC	220V-240V	42W	4000K 5000k	IP20	5300lm	CRI>80
Diffuser	Angel	Tc=C°	Certificates	Application	PF	Directive	Lifespan	Warranty
OPAL	120°	-20/+45	ROHS/CE	INDOR	PF>0.95	LVD	50 000h	5 years



Luminaire light distribution of polar coordinates in the conditional flux 1000lm



Spectrum of light



Distribution of illumination in height hanging lamp 5 m

Coordinates of the luminaire X=15m, Y=5m.