

EPISTAR TRIDONIC



**LED PANEL LIGHT LP600 SURFACE MOUNTED 24W**

**Code: LP624**



**DRIVER**

- Suitable for CE and ROHS Criteria
- High Efficiency >%90
- Harmonic Filter
- Lasts for 50.000 Hr



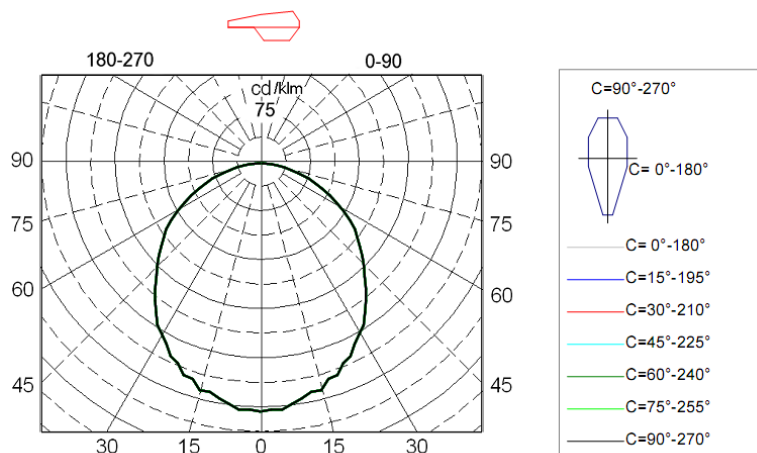
**CABLE**

- 0,80mm Thickness
- Electrolytic Solid Copper
- TI/PVC Isolation

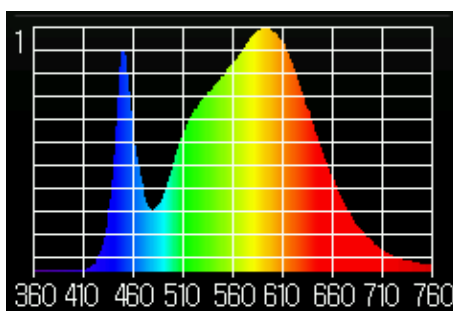


**Electrical Specification**

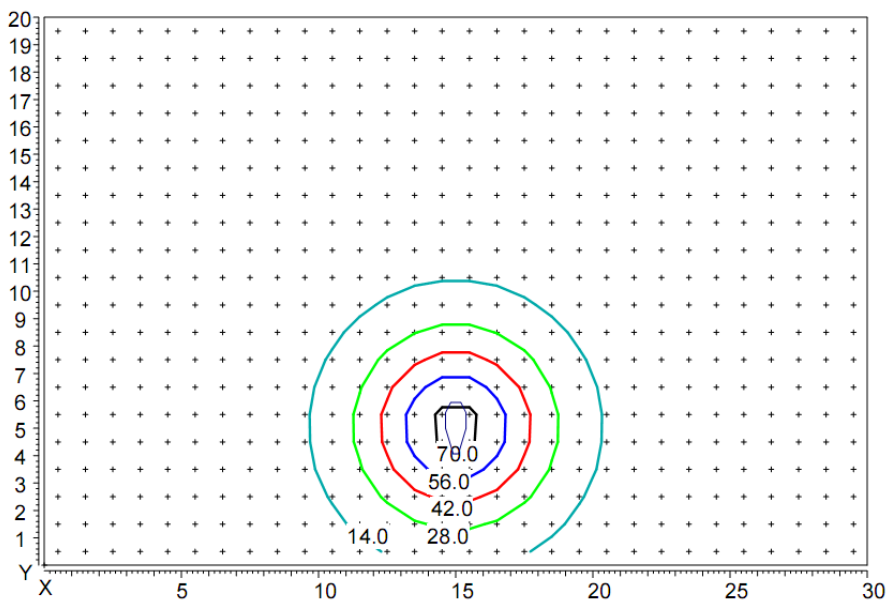
| Size         | Light source     | Driver   | Voltage      | Power       | CCT         | IP level  | lumens   | CRI      |
|--------------|------------------|----------|--------------|-------------|-------------|-----------|----------|----------|
| 600x600x70mm | SMD 5730 EPISTAR | TRIDONIC | 220V-240V    | 24W         | 4000K 5000k | IP20      | 3150lm   | CRI>80   |
| Diffuser     | Angel            | Tc=C°    | Certificates | Application | PF          | Directive | Lifespan | Warranty |
| OPAL         | 120°             | -20/+45  | ROHS/CE      | INDOR       | PF>0.95     | LVD       | 50 000h  | 5 years  |



**Luminaire light distribution of polar coordinates in the conditional flux 1000lm**



**Spectrum of light**



Distribution of illumination in height hanging lamp 5 m

Coordinates of the luminaire X=15m, Y=5m.