

**EPISTAR**    **TRIDONIC**



**LED PANEL LIGHT LP595 BUILT-IN 24W**  
**Code: LP524**



- DRIVER**
- Suitable for CE and ROHS Criteria
  - High Efficiency >%90
  - Harmonic Filter
  - Lasts for 50.000 Hr

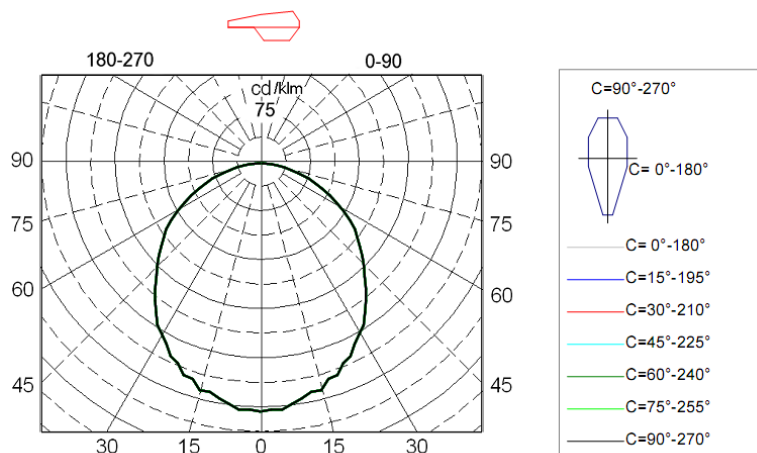


- CABLE**
- 0,80mm Thickness
  - Electrolytic Solid Copper
  - TI/PVC Isolation

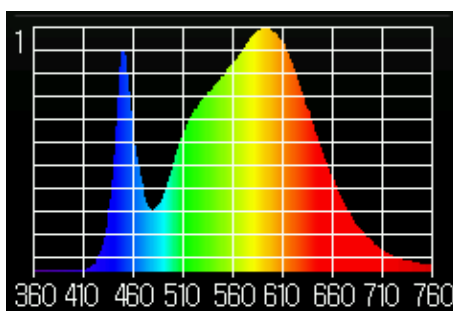


**Electrical Specification**

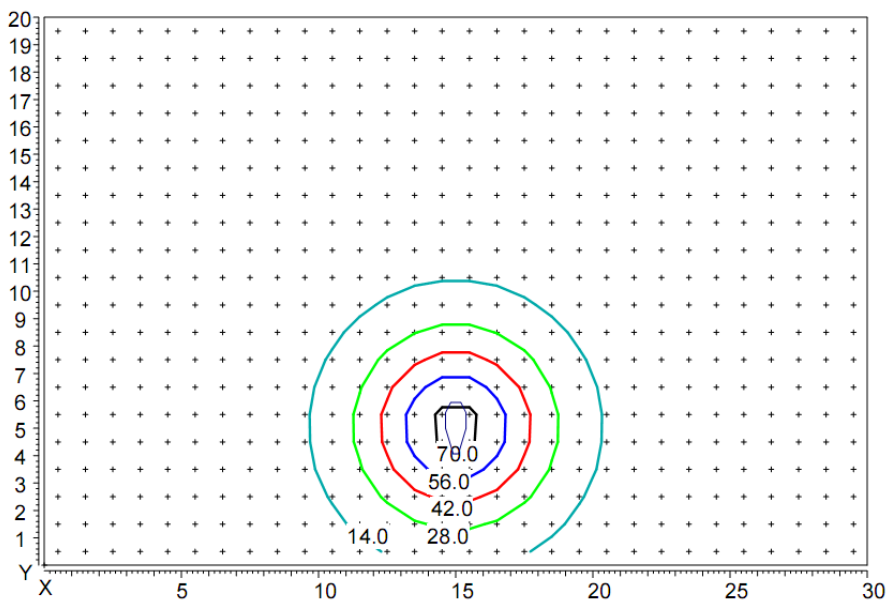
Size	Light source	Driver	Voltage	Power	CCT	IP level	lumens	CRI
595x595x70mm	SMD 5730 EPISTAR	TRIDONIC	220V-240V	24W	4000K 5000k	IP20	3150lm	CRI>80
Diffuser	Angel	Tc=C°	Certificates	Application	PF	Directive	Lifespam	Warranty
OPAL	120°	-20/+45	ROHS/CE	INDOR	PF>0.95	LVD	50 000h	5 years



**Luminaire light distribution of polar coordinates in the conditional flux 1000lm**



**Spectrum of light**



Distribution of illumination in height hanging lamp 5 m

Coordinates of the luminaire X=15m, Y=5m.