

EPISTAR TRIDONIC



SREET LIGHT STL40 25W
Code: 6725ALU50



- DRIVER**
- Suitable for CE and ROHS Criterias
 - High Efficiency >%90
 - Harmonic Filter
 - Lasts for 50.000 Hr

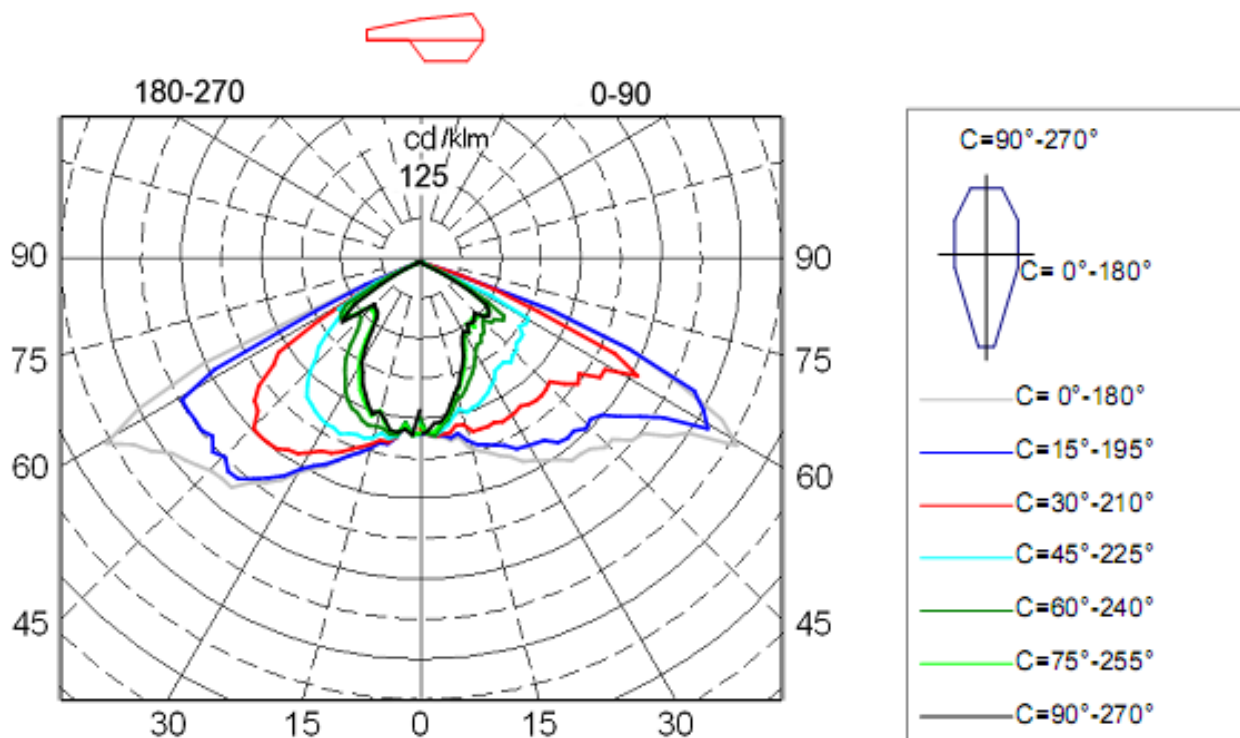


- CABLE**
- 0,80mm Thickness
 - Electrolytic Solid Copper
 - TI/PVC Isolation

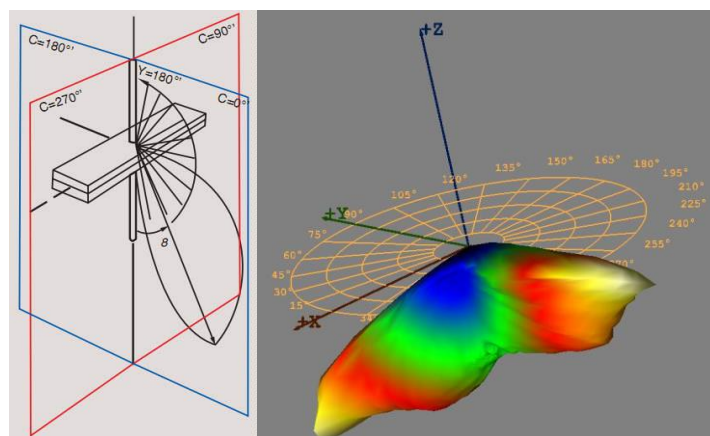


Electrical Specification

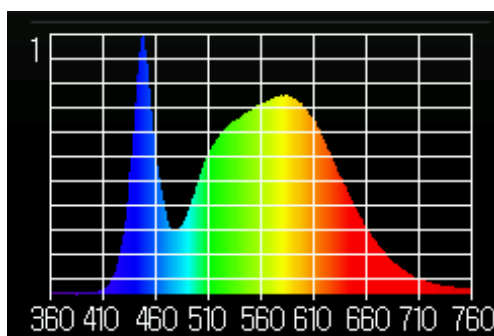
Size	Light source	Driver	Voltage	Power	CCT	IP level	lumens	CRI
640x250x80mm	SMD 5730 EPISTAR	TRIDONIC	220V-240V	25W	5000K	IP67	2750lm	CRI>80
Diffuser	Angel	Tc=C°	Certificates	Application	PF	Directive	Lifespan	Warranty
OPTICS	120°	-20/+45	ROHS/CE	OUTDOOR	PF>0.95	LVD	30 000h	3 years



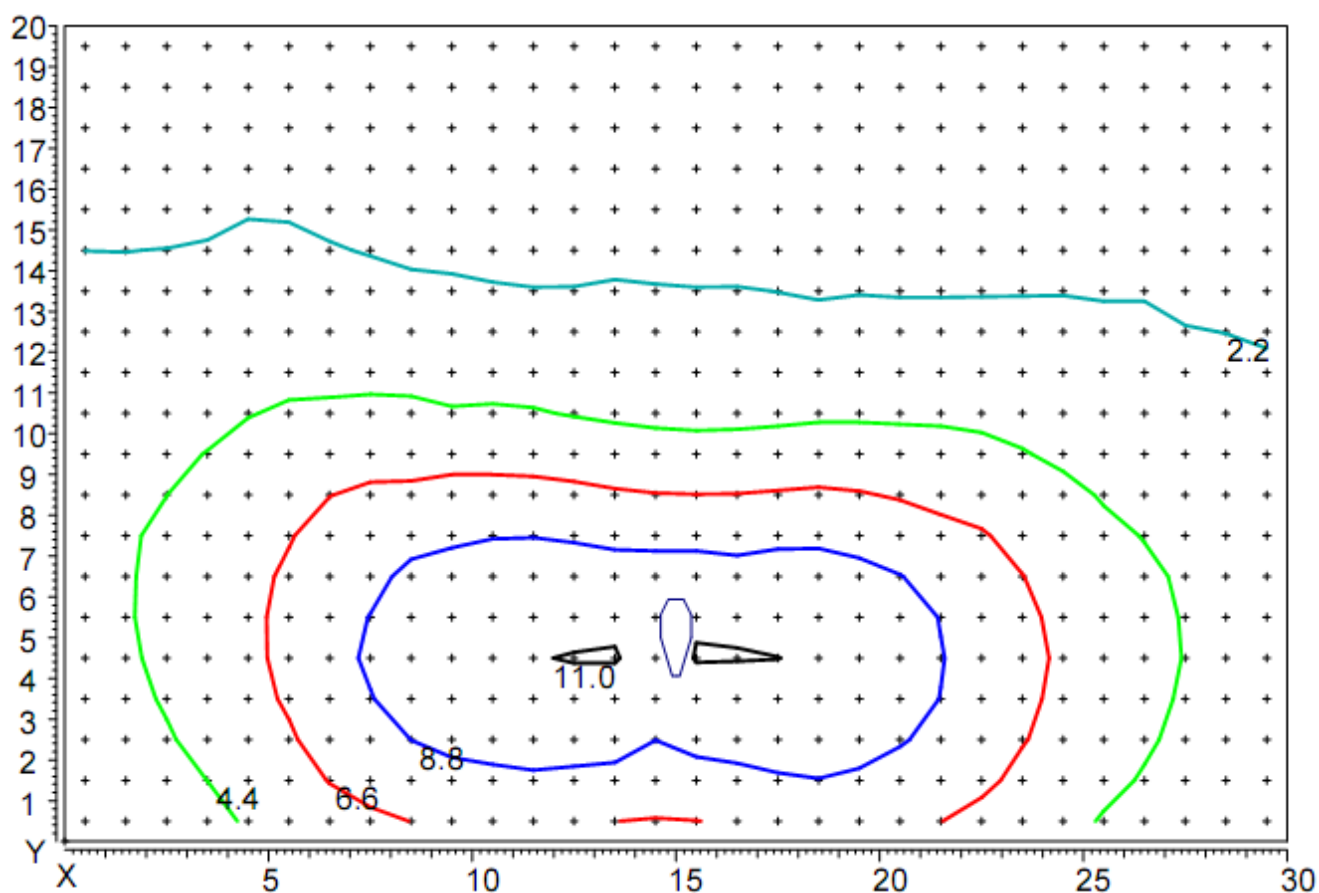
Luminaire light distribution of polar coordinates in the conditional flux 1000lm



Luminaire light distribution of the 3D



Spectrum of light



Distribution of illumination in height hanging lamp 5 m

Coordinates of the luminaire X=15m, Y=5m.