

EPISTAR TRIDONIC



LED PANEL LIGHT LP600 SURFACE MOUNTED 36W

Code: LP636



DRIVER

- Suitable for CE and ROHS Criteria
- High Efficiency >%90
- Harmonic Filter
- Lasts for 50.000 Hr



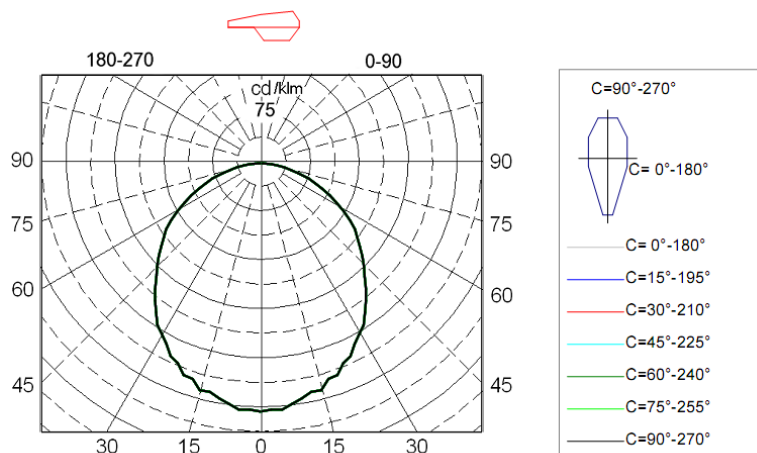
CABLE

- 0,80mm Thickness
- Electrolytic Solid Copper
- TI/PVC Isolation

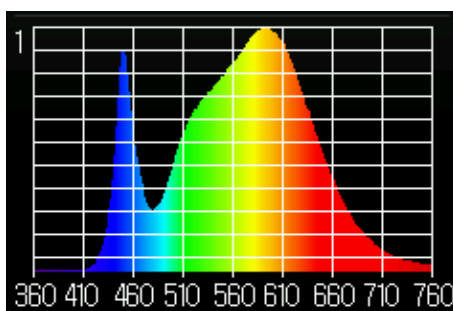


Electrical Specification

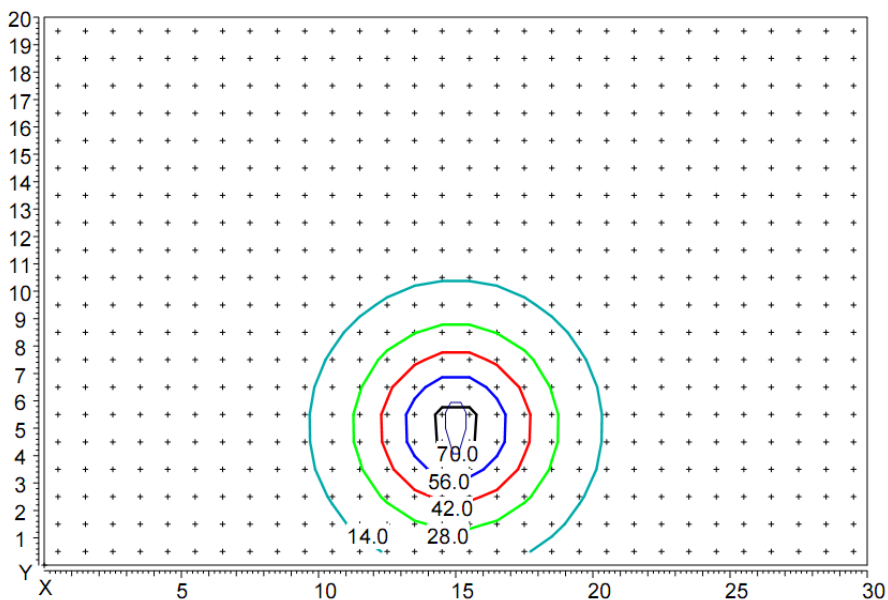
Size	Light source	Driver	Voltage	Power	CCT	IP level	lumens	CRI
600x600x70mm	SMD 5730 EPISTAR	TRIDONIC	220V-240V	36W	4000K 5000k	IP20	4600lm	CRI>80
Diffuser	Angel	Tc=C°	Certificates	Application	PF	Directive	Lifespam	Warranty
OPAL	120°	-20/+45	ROHS/CE	INDOR	PF>0.95	LVD	50 000h	5 years



Luminaire light distribution of polar coordinates in the conditional flux 1000lm



Spectrum of light



Distribution of illumination in height hanging lamp 5 m

Coordinates of the luminaire X=15m, Y=5m.